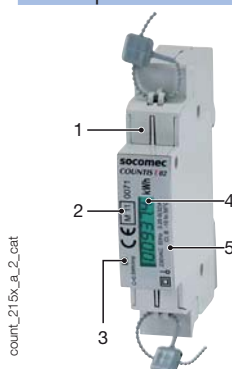


Front panel



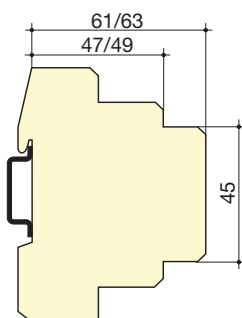
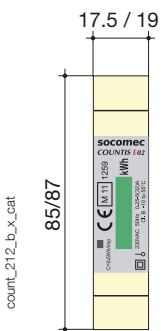
1. Terminal shrouds (COUNTIS E02 + E04).
2. MID Marking (COUNTIS E02 + E04).
3. Metrological LED (2000 pulses/kWh for E00/E02 and 1000 pulses/kWh for E03/E04).
4. kWh display.
5. Serial number (COUNTIS E02).

Electrical characteristics

Current measurement (TRMS)	
Type	single-phase - direct 32 A
Input consumption	< 2 VA
Permanent overload	32 A
Intermittent overload	30 I _{max} for 10 ms
Minimum current measured	20 mA
Voltage measurements (TRMS)	
Range of measurement	196 ... 264 VAC
Input consumption	8 VA
Permanent overload	264 VAC
Energy accuracy	
Active (according to IEC 62053-21)	Class 1
Active (according to EN 50470)	Class B
Power supply	
Self-supplied	yes

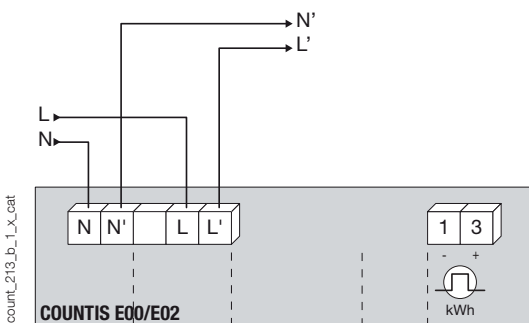
Output (pulsed)		COUNTIS E00/E02
Number		1
Type of optocoupler		15 VDC max
Fixed pulse weight		100 Wh
Pulse duration		100 ms
Operating conditions		
Operating temperature		- 10 ... + 55 °C
Storage temperature		- 20 ... + 70 °C
Relative humidity		95 %
Communication		COUNTIS E03/E04
Link		RS485
Type		2 ... 3 half duplex wires
Protocol		MODBUS® RTU
MODBUS speed		1200 ... 38400 bauds

Case

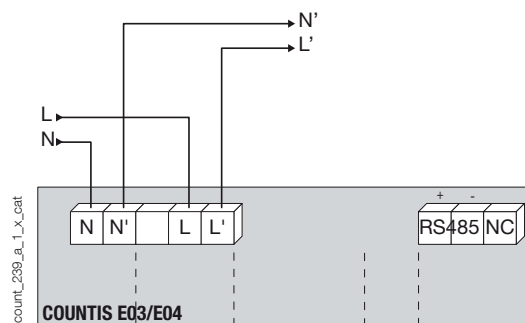


	COUNTIS E00/E02	COUNTIS E03/E04
Type	modular	modular
Number of modules	1	1
Dimensions W x H x D	17.5 x 85 x 61	19 x 87 x 63
Case degree of protection	IP 20	IP 20
Front degree of protection	IP 50	IP 50
Display type	LCD 5+1 digits	LCD 6+1 digits
Rigid cable cross-section	10 mm ²	6 mm ²
Flexible cable cross-section	6 mm ²	4 mm ²
Weight	150 g	150 g

Connection



N - L: network input.
N' - L': network output.
1 - 3: output (pulsed).



References

Type	COUNTIS E00 Reference	COUNTIS E02 Reference	COUNTIS E03 Reference	COUNTIS E04 Reference
Direct 32 A	4850 3019			
Direct 32 A - MID		4850 3020		
Direct 32 A - with MODBUS communication via RS485			4850 3029	
Direct 32 A - with MODBUS communication via RS485 - MID				4850 3030